

SERVICES SELECT COMMITTEE
01 November 2012 at 7.00 pm

Information circulated after the meeting:

6. Kent Joint Municipal Waste Management Strategy: Refresh of Policies (Pages 1 - 26)

Richard Wilson

This page is intentionally left blank

No vans or pick-ups

It is illegal to dispose of waste from any business, trade, or commercial activity at these sites, as they are for household waste only. Vans and pick-ups are not permitted - a 'Kent Business Guide to Waste Services' is available – ask on site or contact Kent County Council. If your household's sole vehicle is a commercial vehicle under 2 metres in height and less than 3.5 tonnes in weight, you may apply for vouchers to allow you access to deposit your household waste (see contact details below).






Domestic vehicles over 2 metres high

If the sole vehicle within your household is a domestic vehicle over 2 metres in height and less than 3.5 tonnes in weight, your vehicle may qualify for vouchers to access a site with household waste only.

To obtain an application form please see contact details below.

If you have a disability and use an adapted vehicle which is over 2m in height, individual arrangements can be made with you so you can access a Household Waste Recycling Centre. Please see contact details below.

Contacts

-  For full details visit www.kent.gov.uk/hwrc
-  **Ask staff** at a Household Waste Recycling Centre
-  E-mail HWRC@kent.gov.uk
-  Call Kent County Council on **0845 345 0210**
-  Text Relay **18001 0845 345 0210**

This is available in alternative formats, languages and an EasyRead version

Household Waste Recycling Centres

Small changes for a small number of people

Starting 1st October 2012

How will these changes benefit me?

- **Less congestion and queuing** - by introducing reasonable limitations on certain materials and ensuring only household waste is accepted
- A more **financially efficient** service allowing for continual investment in the Household Waste Recycling Centre network
- **Safer for customers** and staff by reducing commercial vehicles and large trailers on site



What are the changes?

A limit on trailer size

Trailer bodies of the following size will be allowed at Household Waste Recycling Centres:

- Maximum 2.05 metres (6ft 8") long
- Not exceeding 1 cubic metre (35 cubic feet) capacity
- No wider than the domestic vehicle towing the trailer



Please note: no agricultural trailers or horse boxes.

A small charge will be made for asbestos and tyres

You can take these materials to the following Household Waste Recycling Centres:

North Farm, Dunbrik, Pepperhill, Dover, Sittingbourne, Hawkinge*. Further sites will accept these materials later this year. Location maps are available at all sites and online.

*Asbestos is not accepted; however tyres are accepted at Hawkinge.



Tyres - Limited to car tyres and to a maximum number of **two** per visit - £5.00/visit



Asbestos - Limited to **one sack or equivalent** per visit - £5.00/visit

All major debit and credit cards will be accepted using a chip and pin/signature facility. No cash or cheques will be accepted.

A limit on soil, rubble and hardcore

The amount of soil, rubble and hardcore will be limited to:

- 90kg (190lbs) per visit by a single vehicle or combined with a trailer
- This weight represents the amount you could fit easily in a standard hatchback car boot
- To help you, 33 bricks is equivalent to 90kg



Waste Management
HWRC Implementation
Briefing for KWP Members & Officers
6th September 2012

“Small changes for a small number of people”



Key points to cover

1. Background/context
2. Progress since HWRC review and consultation
3. HWRC operating policies
4. Flytipping and trade waste activity
5. HWRC customer engagement
6. Communication
7. Enquiries & complaints
8. KCC Key contacts

1. Household Waste Recycling Centres Review

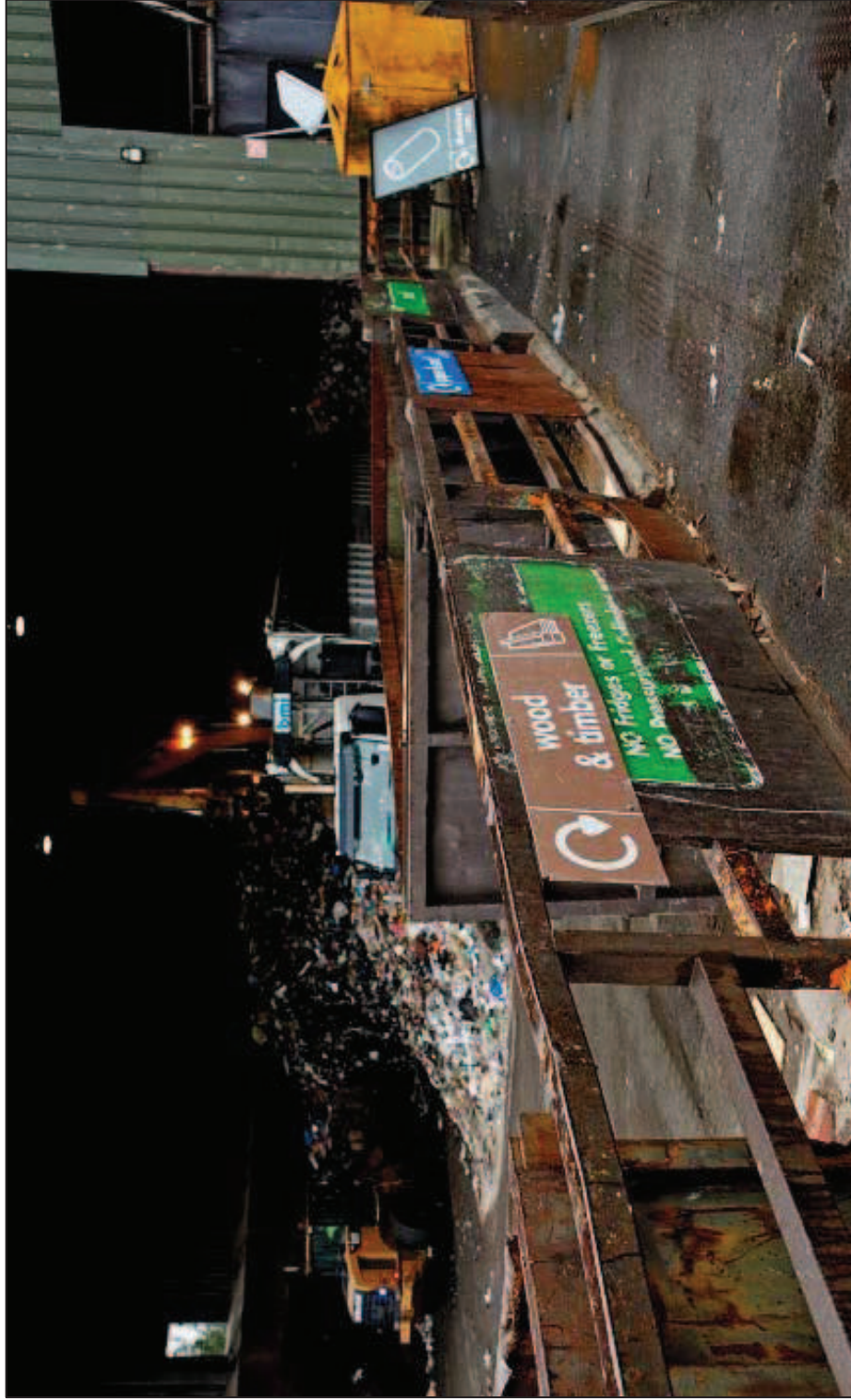
- A more equitable network to ensure balanced provision across the County
- Sites that are fit for the future
- A more financially efficient service
 - which allows for investment in the Household Waste Recycling Centre network

Approach/Timescales

- Member request for major HWRC savings – Option to close up to 6 sites: **January 2011**
- Member IMG Review: **April –September 2011**
- POSC endorsement: **27th September 2011**
- Briefing for all KCC Members: **1st November 2011**
- Briefing for KWP (12 Districts) : **17th November 2011**
- Public consultation: **1st December 2011** for 10 weeks
- Consultation findings and recommendations endorsed by IMG: **February 2012**
- Cabinet: **19th March 2012**
- County Council Debate: **30th March 2012**
- Cabinet Member Decision: **3rd April 2012**
- Implementation: **from October 2012**

Site network & capital investment

Site network & capital investment



Church Marshes HWRC

Site network & capital investment



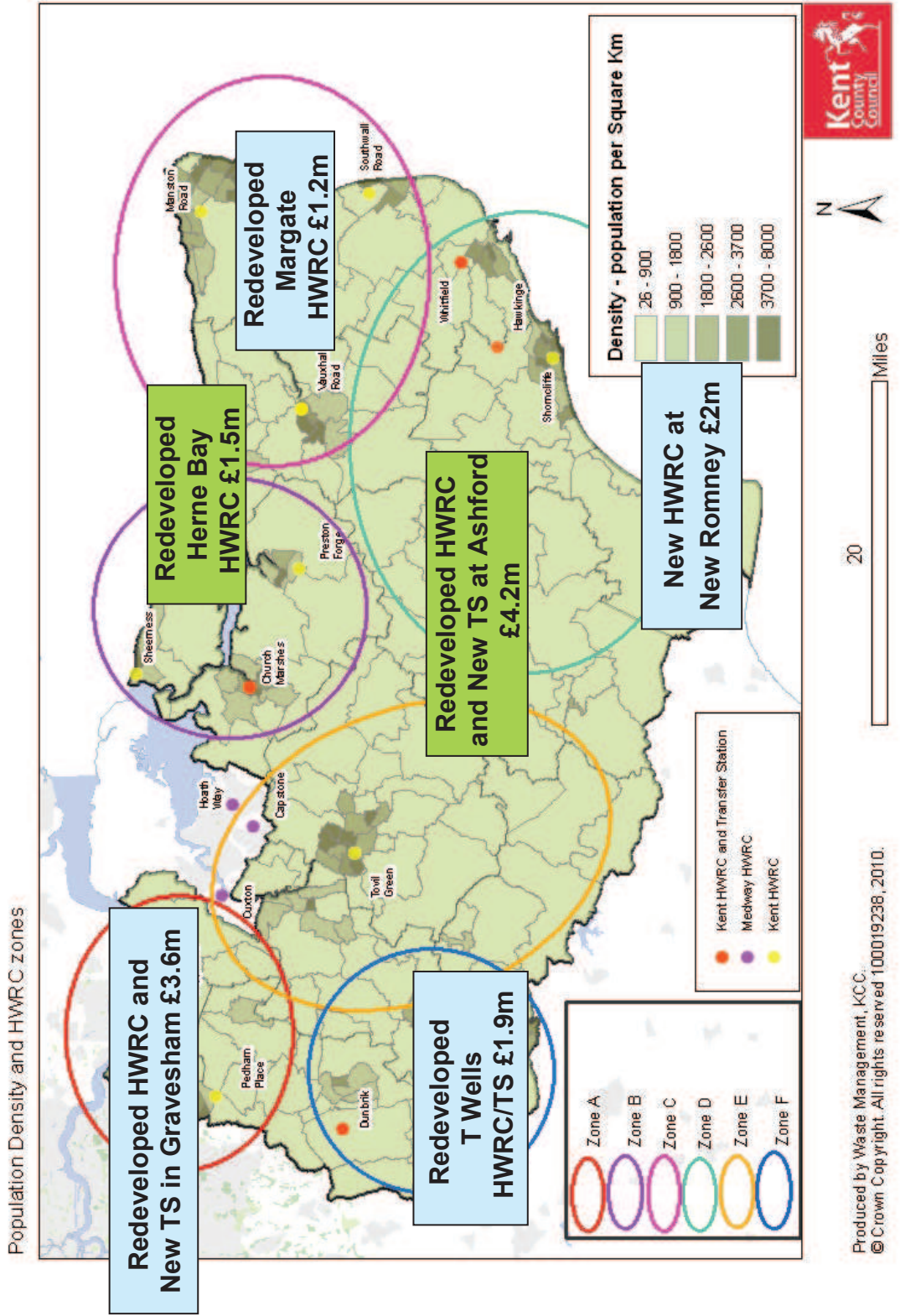
Pepperhill HWRC

Site network & capital investment

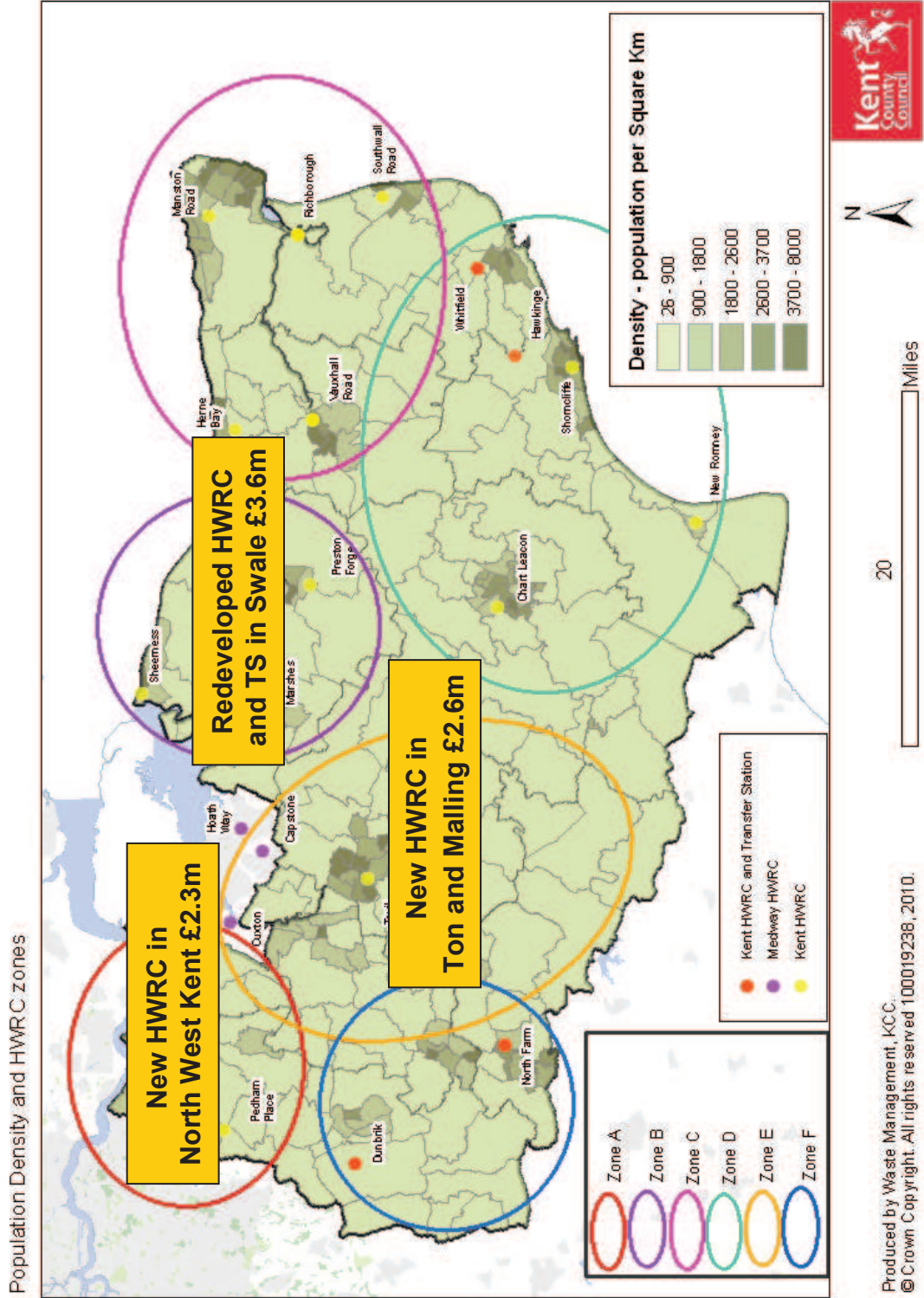


New Romney HWRC

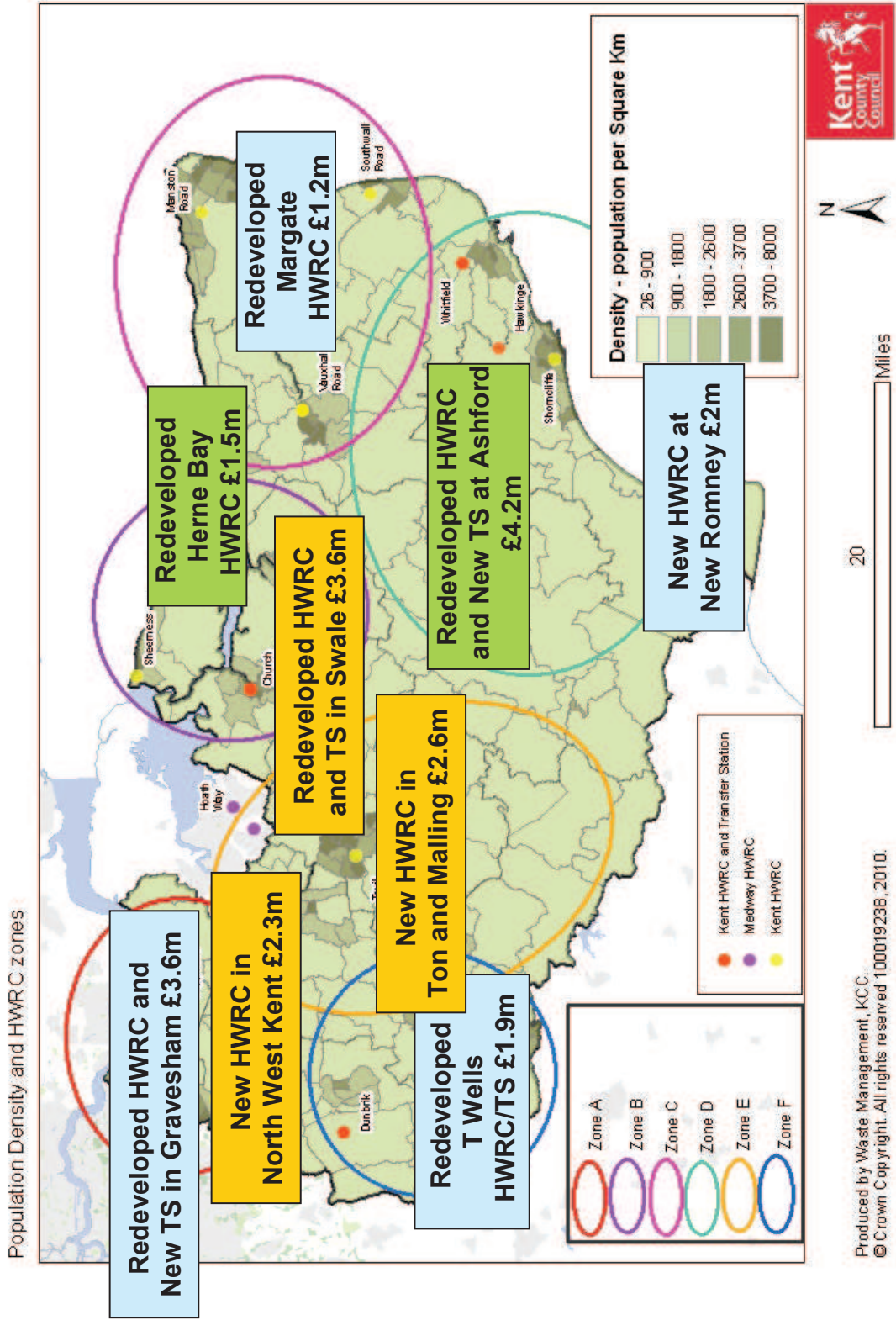
Site network & capital investment



Site network & capital investment



Site network & capital investment



2. Progress since HWRC review / consultation



HWRC Implementation

Implementation schedule:

- Customer engagement - from 3rd September
- Policy Implementation - 1st October
- Richborough HWRC closure – 2013 - tbc
- Hawkinge HWRC closure – 2013 - tbc

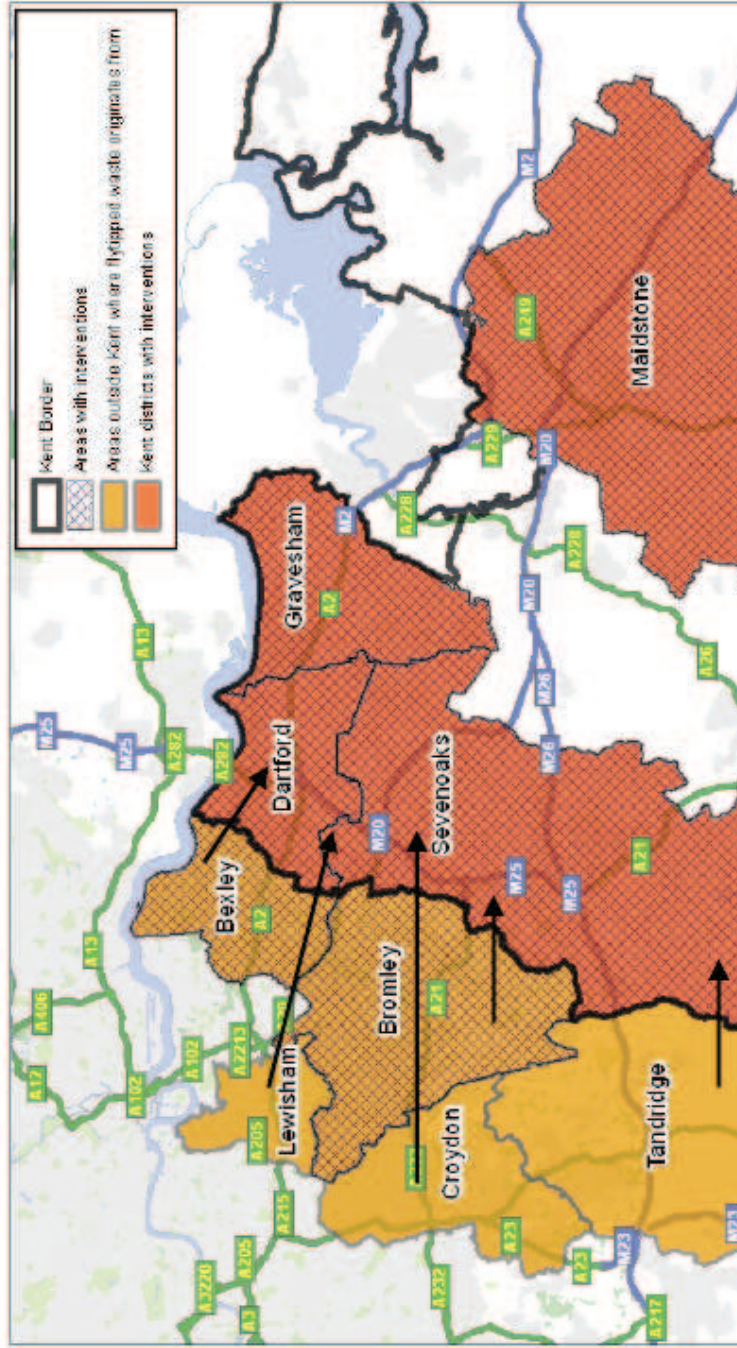
3. HWRC operating policies

Changes
<p>Small charge made for tyres, asbestos: Tyres – limited to car tyres and a maximum of two per visit - £5.00 Asbestos – limited to one sack or equivalent per visit - £5.00</p> <p><i>Accepted at North Farm, Sittingbourne, Dover, Hawkinge, Pepperhill, Dunbrik with 3 HWRCs to be added.</i></p>
<p>Limit on construction waste including soil, rubble, and hardcore: 90kg (190lbs) per visit by a single vehicle or combined with a trailer</p>

3. HWRC operating policies

Changes
<p>The size of accepted trailers: The following sizes will be allowed at the HWRCs:</p> <ul style="list-style-type: none"> • Maximum 2.05 metres long • Not exceeding 1 cubic metre capacity • Not wider than the domestic vehicle towing the trailer • No agricultural trailers or horse boxes <p>No vans, pick-ups and vehicles over 2 metres in height:</p> <ul style="list-style-type: none"> • A voucher scheme for householders whose sole vehicle is a commercial vehicle (under 2m) or a private over height vehicle e.g. camper van • 12 vouchers issued to customers • An exception for householders with disabilities using over height vehicles.

4. Flytipping activity



4. Flytipping activity



4. Flytipping activity



4. Trade waste activity

RUN A BUSINESS AND HAVE RUBBISH TO DISPOSE OF? HERE'S SOME INFORMATION TO HELP YOU.



www.kent.gov.uk/businesswaste




The screenshot shows the Kent County Council website page for 'Business waste (commercial or trade)'. It includes sections for 'Your legal obligations', 'Your options for disposing of business waste', and 'Useful contacts'. The page is designed with a red header and blue navigation tabs.



HOW DO YOU GET RID OF YOUR RUBBISH AND OFFCUTS?



STAY ON THE LEVEL

THE WRONG WAY X

It is wrong to take it to a 'Household Tip'... that's for domestic, not commercial waste...check the website or call- we'll tell you where to go. **It is illegal to fly-tip.** You could be prosecuted with a penalty of 5 years imprisonment or a £50,000 fine.

THE RIGHT WAY ✓

Take it to a licensed waste site... is the right answer! Leave it with the customer... is ok, but if you do have rubbish, check our website for disposal instructions. **I'm not sure...** log on to... www.kent.gov.uk/businesswaste



4. Trade waste activity



HOW DO YOU GET RID OF YOUR RUBBISH AND OFFCUTS?

STAY ON THE LEVEL

THE WRONG WAY X

It is wrong to take it to a 'Household Tip'... that's for domestic, not commercial waste...check the website or call- we'll tell you where to go. **It is illegal to fly-tip.** You could be prosecuted with a penalty of 5 years imprisonment or a £50,000 fine.

THE RIGHT WAY ✓

Take it to a licensed waste site... is the right answer! **Leave it with the customer...** is ok, but if you do have rubbish, check our website for disposal instructions. **I'm not sure...** log on to... www.kent.gov.uk/businesswaste

www.kent.gov.uk/businesswaste

5. HWRC customer engagement



6. Communication

- Press ads in all leading press titles across Kent
- Handouts provided to customers at HWRCs (approx 250,000)
- Signage at the HWRCs
- Petrol pump advertising
- Radio advertisements on Heart FM
- Posters and leaflets at all Kent libraries, Gateways & sports clubs
- Information provided to all Kent Parish/Town Councils , 150 equality and diversity groups, KCC Community Engagement Officers & KCC Community Wardens
- Information provided to key stakeholders e.g. District Councils, Environment Agency, Kent Fire & Rescue Service, Kent Police
- KCC and District contact centres
- KCC website
- Information in district council publications (where publication dates are appropriate)

7. Enquiries & complaints

- Directing customers to appropriate channels
- Resolving the enquiry
- KCC and District Contact Centres
- Corporate complaints procedure

8. KCC Key Contacts

Sue Barton – Strategic Projects & Business Development Manager

- sue.barton@kent.gov.uk
- 01622 605956

Melanie Price – Waste Coordination Manager

- melanie.price@kent.gov.uk
- 01622 605841